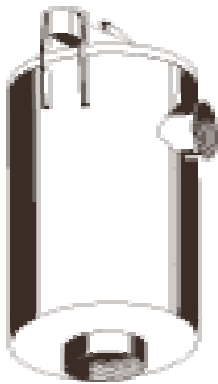


Stainless Steel Strainers



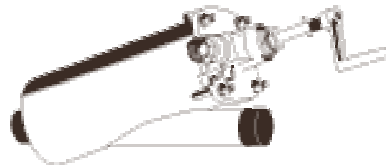
FEATURES AND BENEFITS

- *Corrosion resistant Grade 304 Stainless Steel**
- *1000kpa maximum operating pressure in smooth flow**
- *Optional automatic controller operates on both time and pressure differential**
- *Call APL with your specific requirements**



375 Series Basic Right Angle Filter

****2" Female BSP Threaded
Rated Flow 375lpm**



375 and 500 Series In-Line Filter

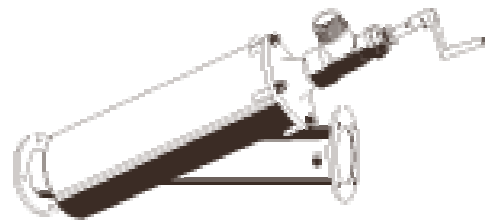
****2" Male BSP Threaded
Rated Flow 375lpm**

****2" Male BSP Threaded
Rated Flow 500lpm**

750 and 1500 Series In-Line Filter

****80mm Flanged
Rated Flow 750lpm**

****100mm Flanged
Rated Flow 1500lpm**



These filters are available to treat flow rates up to 10,000lpm.

Screen sizes up to 4500lpm available are;

150,120,80,and 50 mesh.

0.51mm,0.75mm,1.00mm,1.60mm,3.25mm punched.

Screen sizes available for 4500lpm and over are;

80 and 50 mesh.

0.51mm,0.75mm,1.00mm,1.60mm,3.25mm punched.